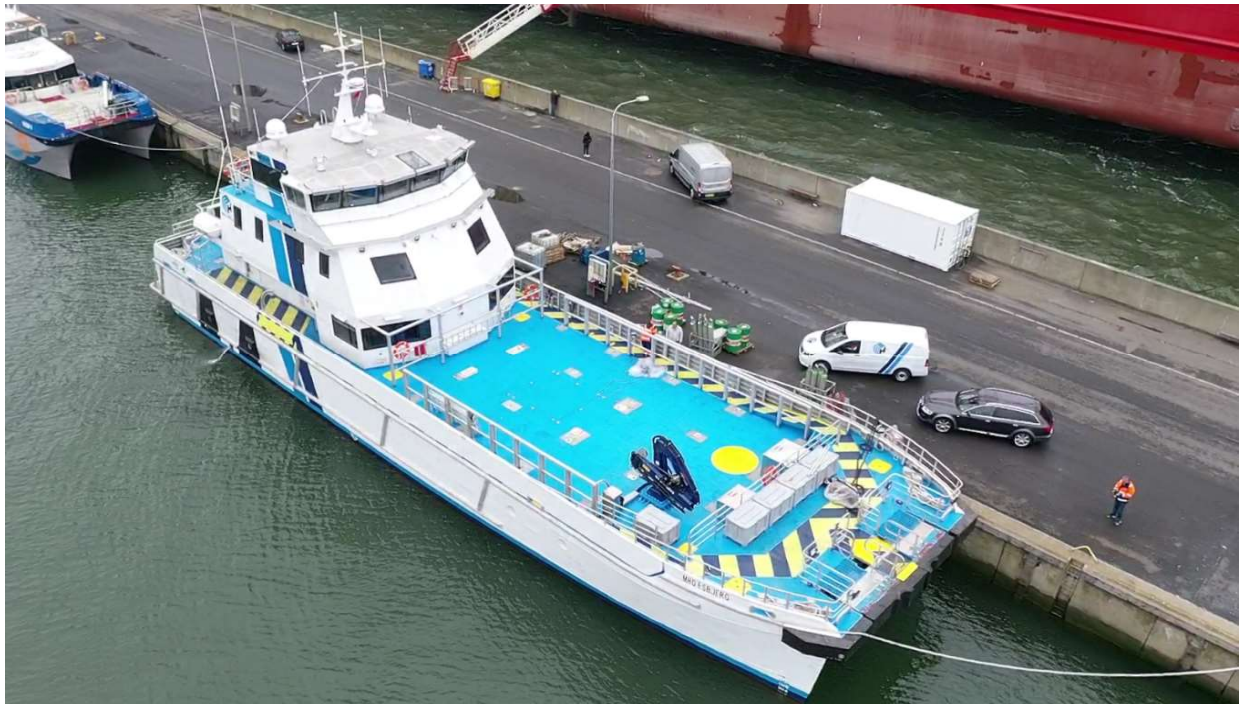


CTV/FSV “MHO Esbjerg” - 24 seats



Vessel Specifications:

Built:	2019
Shipyard:	BTS
Flag:	Danish
Class:	✕ 1A HSLC Crew Windfarm R1
Trade area:	Worldwide
Length O.A:	39 m
Beam:	10,3 m
Max draft:	1,8 m
Air draft:	13,8 m
Bow fender height:	3,5 m
GT:	365,4
NT:	109,6
IMO No.:	9852509
Call Sign:	OXJL2
MMSI:	219023786
E-mail:	Mho-esbjerg@mho-co.dk
Tel:	+45 53 76 46 45
Sat Phone:	+45 82 13 64 23

CTV/FSV “MHO Esbjerg” - 24 seats

Crew and IP facilities:	
Crew:	5
Crew berths:	8 x single cabins + 4 x double cabins
IP:	24
Seats:	24 x suspension with damper seats
Seating area:	7 tables with chairs
Comfort:	1 x lounge with sofa and 42” TV
	4 x 32” TV for safety video and DVD
	WIFI throughout the vessel
	Galley with stove, microwave, coffeemaker + kettle
	2 x public toilets, one with emergency shower
Storage:	3 x freezers, 3 x refrigerators
Performance:	
Max speed workload:	32.000 l fuel, 5 t spares: 25 kn
Max speed full load:	62.000 l fuel + 13 t cargo: 21 kn
Range:	3.000 nm
Capacities:	
Ship tanks:	2 x 16.000 l, total 32.000 l fuel
Cargo tanks:	2 x 15.000 l, total 30.000 l fuel
Fresh water:	Fresh water maker with 2,5 m ³ tank
Sewage:	Sewage treatment plant with 2 m ³ tank
Max cargo:	With 12.000 l fuel: 60.340 kg
Fwd deck area:	100 m ² with 1 t/m ² , partly 2 t/m ²
Aft deck area:	40 m ² with 1 t/m ²
Total deck area:	140 m ²
Container fittings:	2 x 40’ or 5 x 20’ or 10 x 10’
Deck equipment:	
Crane:	AMCO VEBA 815-4S: SWL: 1.065 KG @ 10,25 m
Fuelling:	1 x 40 m 2” hose
Pump capacity	750 l/min @ 23 m / 400 l/min @ 45 m
Pressure washer:	High pressure washer with 40 m hose
Deck output:	3 x reefer plugs

CTV/FSV “MHO Esbjerg” - 24 seats

Engine equipment:	
Main engines:	4 x Cummins K38-M 746 kW
Aux engines:	2 x Cummins QD 50 Hz 50 kW 400V & 230V
Gear boxes:	4 x Reintjes 430 VLJ
Jets:	4 x KaMeWa S50-3/CA
Bow thrusters:	2 x DT2 50kW Hydraulic Tunnel Thrusters
Navigation equipment:	
Radar:	Furuno FAR-1518-BB ARPA radar
Radar:	Furuno DRS-4D-NXT
ECDIS:	2 x Furuno FMD-3100 full ECDIS
VHF:	2 x Furuno FM-8900S
VHF:	Motorola DM-4400E with P-channels
MF/HF:	Furuno FS-1575
AIS:	McMurdo Smart find M5
Sat Compass:	Furuno SC-70
GPS:	Furuno GP-170
Echo sounder:	Furuno FCV-588
Nav tex:	Furuno NX-700
Speed log:	Furuno GS-100
Autopilot:	Navitron NT-888G
Motion dampening:	Humphree Active Ride control
Bridge control:	
Manoeuvring:	Rolls Royce control units with joystick w/ docking mode. Rolls Royce “DP” system
Navigation lights:	Lopolight LED navigation lights
Monitoring:	Praxis control unit CCTV with 24 cameras and 10 days storing Rolls Royce 10” monitor for the jets
BWA	Furuno BR-500 Bridge watch alarm
Charterer facilities:	
On bridge:	1 desk with 2 workstations
	Sofa with 42” TV
	Refrigerator, sink, coffeemaker and kettle